

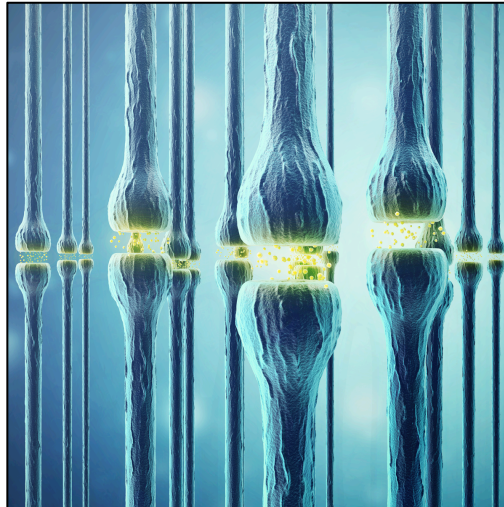
## DID YOU KNOW?

- ✦ Hemp cord found in pottery in Taiwan was dated at 10,000 BCE.
- ✦ Cannabis was part of the US Pharmacopeia until the late 1930's and there existed over 600 commercially available products with cannabis as the active ingredient.
- ✦ There is no lethal dose of cannabis.
- ✦ There are approximately 100 cannabinoids in the cannabis plant.
- ✦ Specific cannabis formulas, plant profiles, cannabinoid ratios, and routes of administration all contribute to the successful outcome of a patient's treatment plan.
- ✦ All mammals have a unique endogenous cannabinoid system (ECS), which is responsible for maintaining homeostasis.
- ✦ Opioid-related overdoses and deaths are plummeting in communities that offer access to medical cannabis.
- ✦ Cannabis potentiates the effectiveness of opioids, and often results in the voluntary reduction of opioid medications.
- ✦ Cannabis has a dependence rate of approximately 9%, which is lower than alcohol, tobacco, sugar, opioids, and caffeine.

## HELPING YOU TREAT CONDITIONS WITH CANNABIS

Eloise Theisen is a board-certified Adult-Geriatric Nurse Practitioner. She received her Post Masters certification from University of Mass, Boston, an MSN in Nursing Administration from California State University, and a Bachelor of Science in Nursing from San Francisco State University.

Eloise was one of the first HCPs to bring a clinical dosing regimen to the cannabis space. She has met with over 4000 patients and has assembled the knowledge and data to use cannabis to treat a broad range of conditions and disease, especially those that commonly afflict seniors—pain, insomnia, anxiety, and depression. There are very few HCPs nationally with the same level of expertise and experience.



# RadicleHealth

All Radicle Health patients receive:

- A comprehensive, 1-hour intake meeting with a knowledgeable clinician and trained support staff.
- A review of the condition you want to treat.
- An assessment of your prescription medications to identify potential contraindications with cannabis.
- A comprehensive treatment plan that includes products, dosing, and titration schedule.
- Guidance on how to administer medicines and use devices.
- Discussion of the benefits and potential side effects of the recommended treatment plan.
- Ongoing support to help you navigate the complexities of cannabis treatment, local laws, and access issues.

[www.radiclehealthcare.com](http://www.radiclehealthcare.com)